

What is the SQE?



- A single, robust, examination all aspiring solicitors will have to take
- To be introduced 1 September 2021
- Everyone will meet the same high standards in a consistent way
- We will no longer specify routes to admission as a solicitor

Qualifying work experience

At least 2 years' experience of legal services, confirmed by a solicitor



Working in law clinics and law firms, as a paralegal and a trainee



No more than 4 different organisations – can be abroad



Delivering legal services; developing some or all of required competences



No requirement for 3 practice areas

SQE1

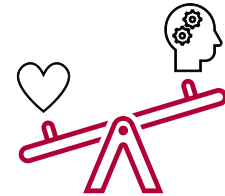
Functioning Legal Knowledge Assessments



Two 180-question
examinations - 10
hours in total



FLK - test ability to
identify legal principles
and apply them to
client problems
and transactions



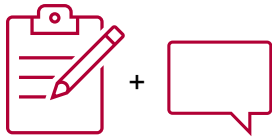
Unflagged ethics
questions
throughout



- Business Law and Practice
- Dispute Resolution
- Contract
- Tort
- Legal System of England and Wales
- Public Law
- Legal Services



- Property Law and Practice
- Wills and Admin of Estates
- Solicitors Accounts
- Land Law
- Trust
- Criminal Law and Practice



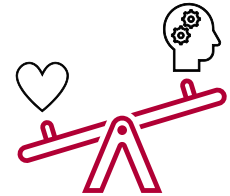
16 written and oral tests - 14 hours in total



Simulating tasks carried out by a solicitor in practice



Tests practical legal skills and functioning legal knowledge equally



Unflagged ethics questions throughout



Six skills assessed

- Client interviewing and attendance note
- Advocacy
- Case and matter analysis
- Legal research
- Legal writing
- Legal drafting



Across **five** contexts

- Criminal Litigation
- Dispute Resolution
- Property Practice
- Wills and Intestacy, Probate Administration and Practice
- Business organisation rules and procedures

- Launched 11 May - sqa.sra.org.uk
- Source of all SQE assessment related information for all stakeholders
- Designed with the focus on the candidate but with input from and information for all stakeholders

SQE website – what is covers

- What the SQE is
- Preparation –
 - Assessment Specifications
 - sample questions
 - dates of assessments
 - what to expect on the day of assessments

SQE website – what is covers

- Steps needed to take the SQE
 - registration and booking
 - payment methods
 - policies such as reasonable adjustments
- After the assessment – results, booking next assessment
- Help and support – candidate services team, policies

Registration and booking

- Registration will open in early/mid July
 - Individual candidate must create an SQE account
 - Pre-booking steps
 - diversity survey
 - registering exemptions
 - requesting reasonable adjustments

Registration and booking

- Nov SQE1 bookings to open later in July
- We will alert the market when registration and booking will be open via the website and social media

Bookings for candidates

- Select a test centre
- Payment method to complete booking
 - Payment by card
 - Use of a pre-paid voucher
 - Booking by employer or training provider

What to expect on the day

SQE1 assessment days

What happens on the day

Assessment centres and arrival times

After you have booked your SQE1 assessment, we will send you an email that includes:

- confirmation of the address of the assessment centre
- the time you must report to the assessment centre to go through the booking-in process
- the start time of the assessment
- the length of the assessment day.

You must be on time. If you are late, you cannot enter the assessment.

Arriving at the test centre before the start of the assessment

When you arrive, you will register and complete ID and security checks. Please check the information in your booking confirmation email before setting off for your assessment.

The assessment day

SQE1 assessment day

SQE2 assessment day

Ready to register for the SQE?

Create your personal SQE account and book your assessments.

[REGISTER FOR SQE](#)

Have you passed the SQE?

Assessment dates update

- SQE1 dates for 2021
 - 8 November (FLK1)
 - 11 November (FLK2)

- First SQE2 will be in April 2022
 - Written part: 11-13 April
 - Oral part, first sitting: 19-20 April
 - Oral part, second sitting: 21-22 April

Assessment dates update – SQE1

- Regular pattern of SQE1 dates from 2023
 - Two sittings in 2023 - January and July
 - Continue to monitor demand for introducing additional SQE1 sittings
 - Add sittings when appropriate, for example, in April and October

Assessment dates update – SQE2

- Regular pattern of SQE2 dates from 2023
 - Two sittings in 2023 - in April and July
 - Rising to three SQE2 sittings in 2024 (January, April and July)
 - Ultimately four SQE2 sittings (January, April, July, and October) when appropriate

SQE assessment dates update

- Candidate journey: allows candidates that pass SQE1 to book the next available sitting of SQE2
- Advance notice
 - Assessment dates: 12 months in advance
 - New assessment window: 18 months in advance

Results timings

- SQE1
 - 6-10 weeks
- SQE2
 - 14-18 weeks

sqa.sra.org.uk/help

[About SQA](#) [Registering and booking](#) [Exam arrangements and results](#) [Help and support](#)

Help and support

There are several ways to get help and support. You will be able to find most of what you need on our website. But if you can't, you can [contact us](#).

For the fastest way to find what you're looking for, use the categories listed below.

[Open all](#)

Reasonable adjustments



Exemptions



Vouchers



Further resources



For info on SQE
assessment:

sqa.sra.org.uk

or contact

Candidate Services



Follow us on

**Career in
Law**



For info about wider
qualification:

sra.org.uk/sqe

or contact

sqa@sra.org.uk